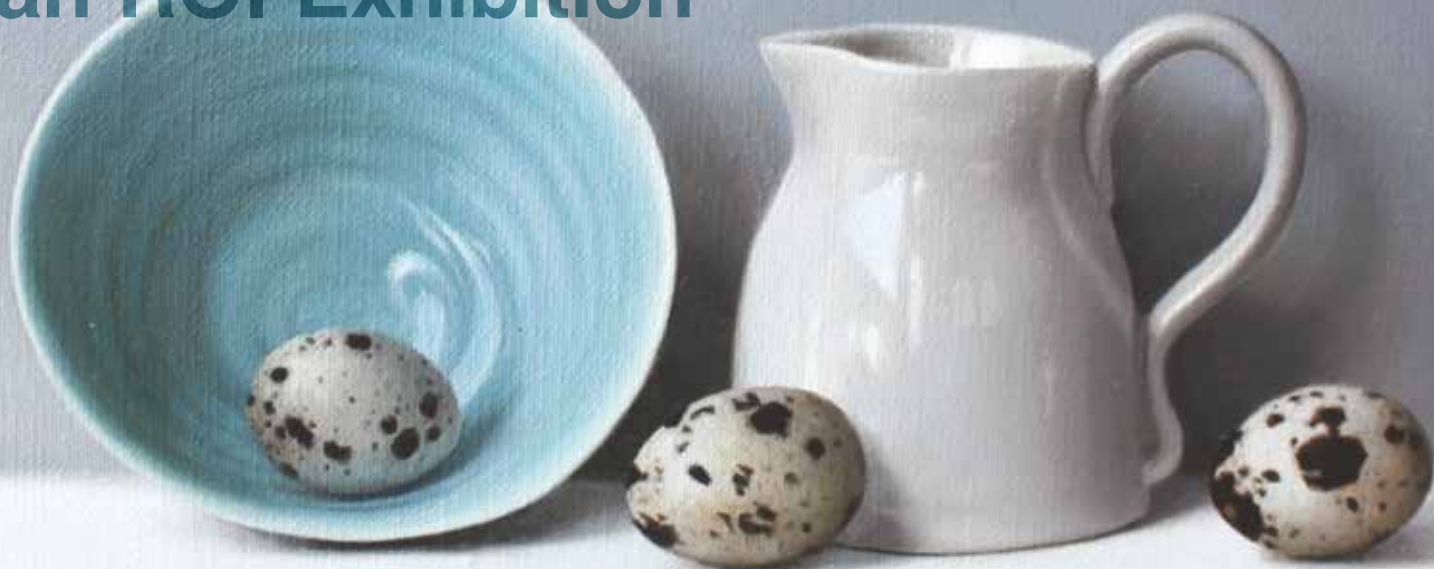


MY FAVOURITE SUBJECT: an ROI Exhibition

M

M1 Fine Art


ROI
THE ROYAL INSTITUTE OF OIL PAINTERS



1st September – 1st October 2017

MY FAVOURITE SUBJECT:

an ROI Exhibition

We all have a favourite subject, whether it be sport, a particular pastime, family or even a lover. It's not always easy to ascertain someone's passion in life but when it comes to artists, we're granted a glimpse into their psyche through the work they produce and display.

Determining what drives an artist however may not be as easy as one might first believe. A painting of Paris' Champs Élysées may indicate a love of the French capital, but on further consideration, it could equally be argued that the study of architecture, interpersonal relationships, fashion or even travel constitutes the artist's raison d'être.

Running throughout the entire month of September this year, 'My Favourite Subject' will see members of the most highly regarded institute relating to oil painting (The ROI) present physical representations of their favourite subjects, each in their own trademark styles. Learn about what drives these industry leaders and explore the differing ways they each express themselves through the paintings they produce.

Enjoy guessing what each artist's favourite subject is, but remember, things may not always be as clear cut as you first think...

Beyond The Glare
Natalia Avdeeva
48 x 36 inches | £2,600





“ As artists, we are compelled to paint, it’s a necessity that drives us every day. But choosing what to put onto canvas is often half the battle. Our differing interests and passions in life mean we’re all starting from a different point of view and even when depicting the same subject, we’ll all have a unique take on it. Thank goodness that’s the case or the art world would be a much more uniform place!

Ian Cryer

President of the ROI.

Led by its president, Ian Cryer and Vice President Tim Benson, The Royal Institute of Oil Painters was founded in 1882 and was granted royal status by King Edward VII in 1909. Confined to a very limited number of elected members, who each demonstrate the required level of excellence in the field of oil painting.

The ROI encompasses all styles and techniques - a tradition that dates back to its inauguration. The Royal Institute of Oil Painters demands the same high standard of excellence set by legendary artists of the past, such as Rodin, who have shown their work in ROI exhibitions.

Its records, beginning in 1882, are held in the Victoria & Albert Museum.

EXHIBITING ARTISTS

Ian Cryer (PROI)

President of The Royal Institute of Oil Painters (PROI), Ian Cryer was born in 1959. He is a West Country Artist, known worldwide for his modern impressionist oil paintings of evocative landscapes, timeless railway imagery, interiors and intriguing characters. His style has evolved as a result of many years working directly from life, this having given him a freshness and spontaneity that are the hallmarks of his work.

Cryer's rise to President of the ROI resulted from his phenomenal success over decades in exhibitions with many professional Art Societies including the Royal Academy and the ROI itself. His integration within these revered organisations has ensured he is acknowledged as one of the leading oil painters of our time and one to watch as his career continues to develop.

His works are held in many private and public collections including Pricewaterhouse-Coopers, Longleat House and The House of Lords' Permanent Collection. He has also enjoyed lucrative commissions from the likes of the Crossrail Project, English, Welsh and Scottish Railways and Royal Mail.



Tim Benson (VPROI)

Tim was elected as Vice President of the ROI in 2013 following his education at Glasgow School of Art and Byam Shaw School of Art from 1998-2001.

Regularly exhibiting in solo and group exhibitions around the UK, Tim displays fine art paintings, which have received widespread critical acclaim and accordingly has established a large following and collector base. His relative youth is impressive when considering he has already exhibited at The National Portrait Gallery and has been commissioned by the likes of Michael Palin CBE and Brian Cox CBE.

He is fascinated with creating the distinguishable likeness of a subject but moreover evoking the subject's character and mood. He is never satisfied with simple representation and prefers instead to concentrate on bringing to his work an emotive and often visceral quality.

Adebanji **Alade**

Linda **Alexander**

Naomi **Alexander**

Natalia **Avdeeva**

Chris **Bennett**

Richard **Combes**

Bill **Dean**

Roger **Dellar**

Roger **Ferrin**

Lachlan **Goudie**

Helen **Hale**

Philip **James**

Robin **Mackervoy**

Tony **Merrick**

Ronald **Morgan**

Barry **Peckham**

David **Pilgrim**

Valerie **Smith**

Nick **Verrall**

Graham **Webber**



Devon Coastline
Roger Dellar
20 x 20 inches | £1,895



Rockflight
Helen Hale
42 x 22 inches | £1,975



Left

Nelson's Column
Graham Webber
16 x 24 inches | £1,600

Right

Late Afternoon, St Mark's
Roger Ferrin
32 x 28 inches | £1,200





Above

Quail's Eggs
Linda Alexander
30 x 30 inches | £2,950

Left

Cornflowers
Valerie Smith
11 x 14 inches | £750

Far left

Thames View
Ian Cryer (PRO)
36 x 24 inches | £3,750



Above
Eve
Chris Bennett
28 x 28 inches | £3,995



Right
From The Shard
Philip James
40 x 60 inches | £2,700



Sunbathing
Naomi Alexander
40 x 30 inches | £2,250

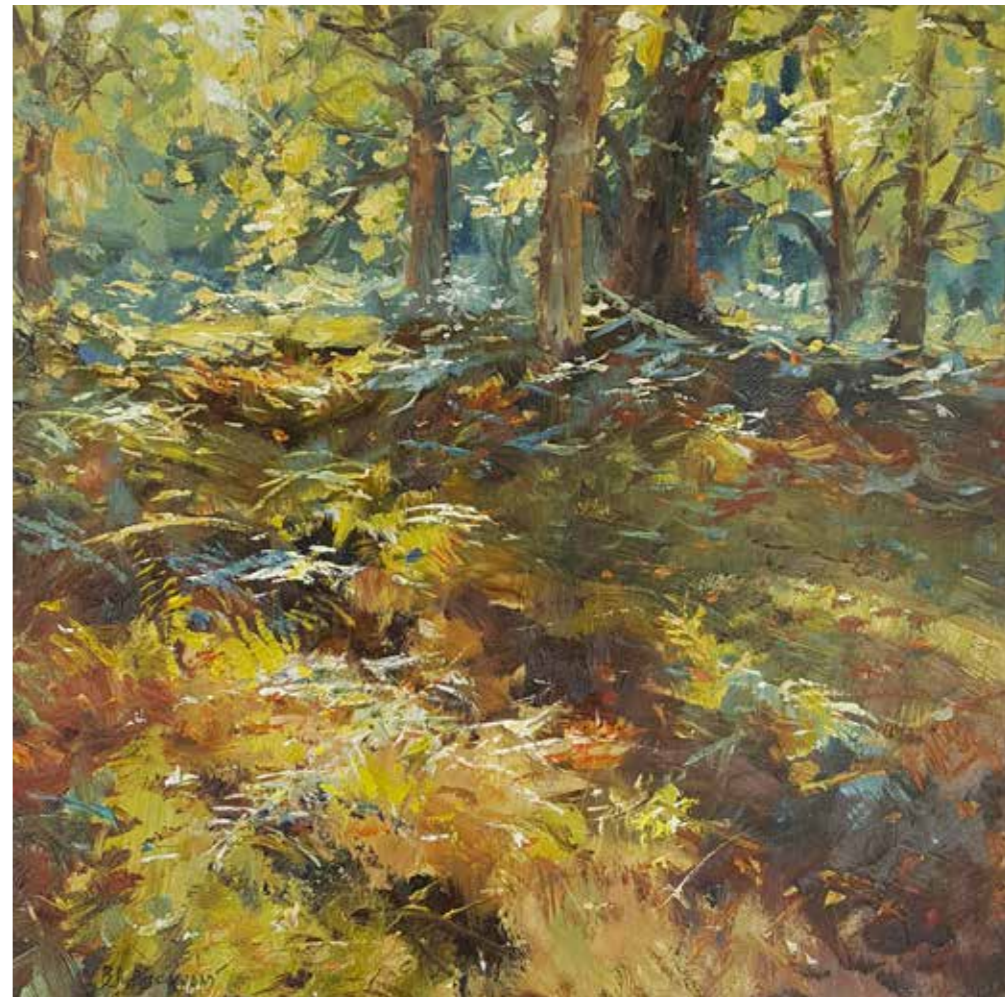


Left

Morning Light
AdebANJI Alade
40 x 28 inches | £7,875

Right

Oakley Wood
Barry Peckham
15 x 15 inches | £950





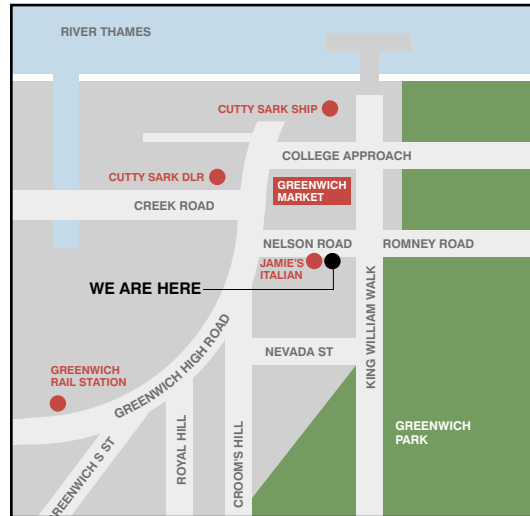
By The Serpentine
Ronald Morgan
12 x 9 inches | £400



True Light
Tim Benson (VPROI)
48 x 60 inches | £9,500



M1 Fine Art



20 Nelson Road, Greenwich, London SE10 9JB T: +44 (0)20 8269 0906 E: info@M1fineart.com www.M1Fineart.com

Gallery Opening Hours: Mon–Fri 10am–6pm, Sat & Sun 9am–7pm

Exhibition runs from 1st September – 1st October 2017

Cover image 'Blue Bowl' Linda Alexander | 9 x 7 inches | £1,250